

COUGAR[®]

INDUSTRIES, INC.



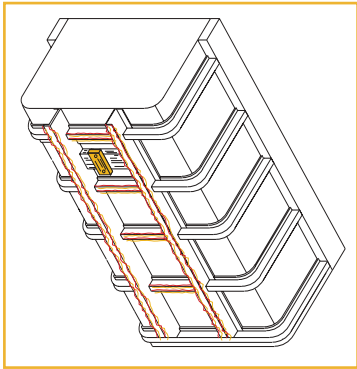
Truck Vibrators

- 16 models available
- 12/24 volt or hydraulic models available
- 80 to 3200 lbs force output
- Made in America

Cougar® Truck Vibrators

When wet, sticky, or frozen material clinging to your dump vehicle is the problem, Cougar's line of compact, lightweight truck vibrators is the answer.

Our complete line of rugged, durable Truck Vibrators are tightly sealed against dirt, dust, and water for long life in extreme conditions. Shielded, oversized, permanently lubricated ball bearings assure exceptional service life. High-speed, low-amp electric motors keep size and weight to a minimum for easy, low-cost installation. And Cougar Truck Vibrators bolt to a mounting plate welded to the frame to maximize vibration effectiveness.



A simple push of the button activates the vibrator. Hold for a few seconds until the load begins to move.


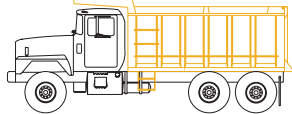

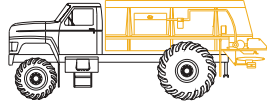





Cougar Truck Vibrators Also:

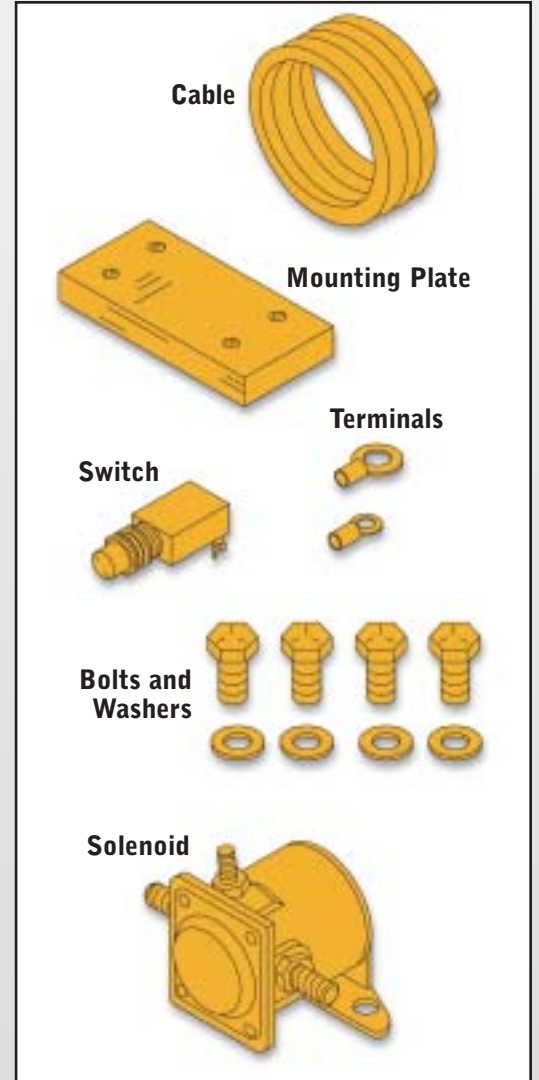
- **Increase productivity** - Since carry-back is practically eliminated, more payload can be hauled on each cycle. More material hauled means fewer cycles to move a given amount of material. That translates to lower labor and fuel costs, and reduced vehicle wear. With Cougar vibrators, dump times are also faster, and material is more evenly distributed when spreading. Labor costs may be further reduced since the need for an employee to clean out truck beds may be completely eliminated.
- **Reduce common causes of equipment damage** - Extra strain on hydraulic components from lowering half-full beds is eliminated. Operators won't need to bang the tailgate to loosen material. Drivers don't need to slam the brakes or "pop" the clutch to loosen the load minimizing the potential for damaging critical components. And there's no need to clean out the bed with a backhoe or other equipment that can scar the bed and create even more places for material to stick.
- **Reduce risks associated with dumping and spreading cohesive materials** - Cougar Truck Vibrators help keep the operator inside the cab and off the back of the truck. Truck vibrators can also facilitate material flow to minimize possible "tip over" during spreading or dumping.



Selection Guide

Model Number	Body Length (ft)	Body Capacity (yd ³)	Body Style
DC-3200 HT-3200	15-40	15-30	 Tandems/Live Bottoms/ Multi-axes to 40'
DC-3200 DC-2700	10-15	8-16	 Rear dump
DC-2500 DC-1600	9-10	5-10	 Rear dump
DC-2500 DC-1600	10-15	7-10	 Spreader body
DC-1600 DC-1000	8-9	2-5	 Rear dump
DC-1000 DC1-400	7-8	1-2	 Concrete pumps Bins/Hoppers/Chutes
DC-80	NA	1	 Spreader on pickup truck bed

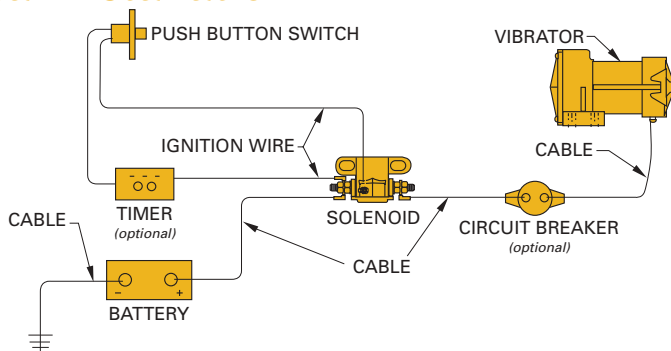
Installation Kits



Installation kits are shipped standard with the DC-1000 through the DC-3200. Each "DC" installation kit includes 25' of cable (40' w/ the DC-3200), mounting plate, bolts, washers, switch, solenoid, terminals, and installation instructions. Installation kits for the DC-80 and DC1-400 include mounting bolts and washers. Circuit breakers (optional) are recommended for all "DC" vibrators.

The HT-3200 installation kit includes a mounting plate, bolts, and washers.

Typical Installation



Performance

12V

Model	Amps	Max.RPM	Force lbs.	Offset wt.
DC-3200	85	4000	3200	7.0 in.lb.
DC-2700	75	4500	2700	4.7 in.lb.
DC-2500	72	5000	2500	3.5 in.lb.
DC-1600	70	5000	1600	2.3 in.lb.
DC-1100	70	5000	1100	1.5 in.lb.
DC-1000	22	5000	1000	1.4 in.lb.
DC1-400	15	3800	410	1.0 in.lb.
DC-80	5	4000	80	.18 in.lb.

24V

Model	Amps	Max.RPM	Force lbs.	Offset wt.
DC-3200	62	4000	3200	7.0 in.lb.
DC-2700	55	4500	2700	4.7 in.lb.
DC-2500	55	5000	2500	3.5 in.lb.
DC-1600	55	5000	1600	2.3 in.lb.
DC-1100	55	5000	1100	1.5 in.lb.
DC-1000	11	5000	1000	1.4 in.lb.
DC1-400	7.5	3800	410	1.0 in.lb.

Model	Max GPM/PSI	4000	3200	7.1 in.lb.
HT-3200	5.6/1500			

Specifications and Dimensions*

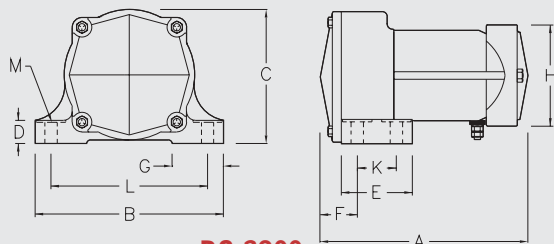
DC

Model	Dimensions								Foot Dim.		Bolt (Qty.)	Weight lbs.
	A	B	C	D	E	F	G	H	K	L	M	
DC-3200	10 ³ / ₈	9 ³ / ₄	6 ⁷ / ₈	1 ³ / ₁₆	3 ⁵ / ₈	2	2 ⁹ / ₁₆	5 ¹ / ₄	2	8	5/8 x 1 ³ / ₄ (4)	36
DC-2700	10	9 ³ / ₄	6 ⁷ / ₈	1 ³ / ₁₆	2 ¹ / ₄	1 ³ / ₄	2 ⁹ / ₁₆	5 ¹ / ₄	8	8	5/8 x 1 ³ / ₄ (2)	32
DC-2500	10	9 ³ / ₄	6 ⁷ / ₈	1 ³ / ₁₆	2 ¹ / ₄	1 ³ / ₄	2 ⁹ / ₁₆	5 ¹ / ₄	8	8	5/8 x 1 ³ / ₄ (2)	31
DC-1600	10	9 ³ / ₄	6 ⁷ / ₈	1 ³ / ₁₆	2 ¹ / ₄	1 ³ / ₄	2 ⁹ / ₁₆	5 ¹ / ₄	8	8	5/8 x 1 ³ / ₄ (2)	30
DC-1100	10	9 ³ / ₄	6 ⁷ / ₈	1 ³ / ₁₆	2 ¹ / ₄	1 ³ / ₄	2 ⁹ / ₁₆	5 ¹ / ₄	8	8	5/8 x 1 ³ / ₄ (2)	30
DC-1000	9	9 ³ / ₄	6 ¹ / ₂	1	2 ¹ / ₄	2 ¹ / ₄	2 ¹ / ₂	3 ⁷ / ₈	8	8	1/2 x 1 ¹ / ₂ (2)	23
DC1-400	9 ¹ / ₁₆	6 ³ / ₈	5 ⁹ / ₁₆	1 ¹ / ₈	6 ¹ / ₄	2 ³ / ₄	1 ¹⁵ / ₁₆	4 ¹ / ₄	3 ³ / ₄	5	3/8 x 1 ¹ / ₂ (4)	18
DC-80	5 ¹¹ / ₁₆	5	3 ⁷ / ₁₆	1/2	3	1 ¹³ / ₁₆	1 ⁹ / ₁₆	2 ¹¹ / ₁₆	2	4	3/8 x 1 ¹ / ₄ (4)	5

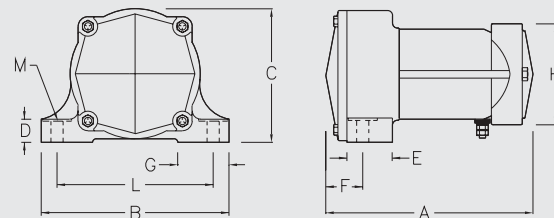
Hydraulic

HT-3200	9 ¹¹ / ₁₆	9 ³ / ₄	5 ³ / ₁₆	1 ¹ / ₄	3 ³ / ₄	2 ¹ / ₁₆	2 ¹ / ₂	2 ⁷ / ₈	2	8	5/8 x 1 ³ / ₄ (4)	30
---------	---------------------------------	-------------------------------	--------------------------------	-------------------------------	-------------------------------	--------------------------------	-------------------------------	-------------------------------	---	---	-----------------------------------------	----

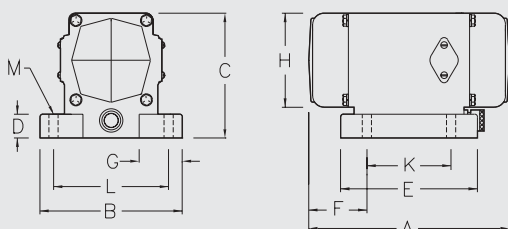
*In inches



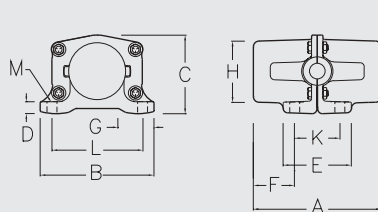
DC-3200



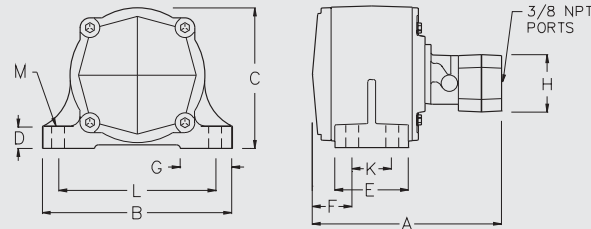
DC-1000, DC-1100, DC-1600, DC-2500, DC-2700



DC1-400



DC-80



HT-3200

Optional Equipment

- Cable (by the foot)
- Circuit breaker
- Timer
- Timer enclosure
- Continuous duty kit (DC-80, DC1-400, DC-1000)

Ordering Information

When ordering please specify:

- Vibrator model number
- 12V or 24V preference
- Aluminum or steel truck body



3600 Cougar Drive
Peru, IL 61354-9336
Tel: (815)224-1200
Fax: (815)224-1241

For More Information, Contact Cougar toll free at 1(800)262-2106

Specifications subject to change

© Copyright 1999 Cougar Industries, Inc. Printed in the USA 10/99 Form# 425