

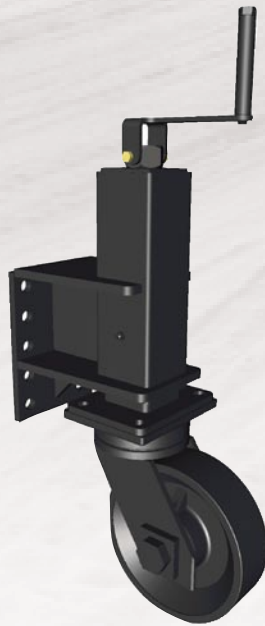
"Demanded by Those Who Know Quality"

RUNNING GEAR



Mushroom Shoe Assembly

This shoe assembly features a heavy-duty cast ductile shoe which gets its name from its inverted mushroom-type shape. The telescopic assembly is offered in both standard or heavy-duty versions.



10" Kingpinless Steel Wheel Caster Assembly

Steel Casters have proven themselves as one of the most durable and reliable running gears on the market today. The Bonnell Steel Caster Assemblies feature a greaseless, Kingpinless swivel assembly which can withstand loads of up to 20,000 lb. They also feature a heavy-duty telescoping height adjustment consisting of an outer housing constructed of 3-1/2" square structural tubing. These running gears will withstand years of the severe conditions encountered when plowing snow.



Rubber Tire Assembly

Rubber tire assemblies feature either 5.70 x 8.0 pneumatic tires or foam filled tires on a heavy-duty cast hub. These tires are offered on a swivel arrangement, allowing the tire to trail in the direction of travel. These assemblies do not caster 360°.



HD Even Wear Shoe Assembly

These Bonnell Even Wear Shoe Assemblies feature a ball and socket type design which allows the shoe to pivot and rotate about the center of the ball. Because of these allowed motions, the shoe will follow the changing contour of the road, and wear much more evenly than conventional shoes, thus prolonging the life of the shoe.

The top bolt design feature allows a full 2" of shoe wear without wearing into the bolt heads.

MX1 Straight Snow Plow Specifications

RUNNING GEAR	ITEM CODE	DESCRIPTION	PART NUMBER
Mushroom Shoe Assembly	MS	Standard Assembly	Bon-001328
	MH	Heavy Duty Assembly	Bon-001329
10" Kingpinless Steel Wheel Caster Assembly	KP10	10" Caster	Bon-003239
Rubber Tire Assembly	RP	Pneumatic Tire	Bon-002600
	RS	Foam Filled Tire	Bon-002600-FF
Even Wear Shoe Assembly	EH	Heavy Duty Assembly	Bon-003274

Sold By:



1385 Franklin Grove Rd. • Dixon, IL 61021 • www.bonnell.com
(815) 284-3819 • (800) 851-9664 • Fax (815) 284-8815

Bonnell Industries reserves the right under its product improvement policy to change construction or design details and furnish equipment when so altered without reference to illustrations or specifications used herein.
© 2006 Bonnell Industries, Inc. | 0306

