

# THE ORIGINAL PULLTARP SYSTEM



## 6" OPEN

A basic system that is great for applications where loader and wind damage are not a concern. Handles applications up to 22' with Straight Tarp and 16' with Side Flap Tarp.

6" Open - Part # 101-0235

Optional Spacer Rod - Part # 501-9902



## 9" OPEN

A higher capacity system that is great for applications where loader and wind damage are not a concern. Handles applications up to 33' with Straight Tarp and 30' with Side Flap Tarp.

9" Open - Part # 105-0235

Optional Spacer Rod - Part # 501-9902



## ALUMINUM

A light weight system that is great for applications where loader damage and falling debris is not a concern. Available with or without a wind guard. Handles applications up to 22' with Straight Tarp and 16' with Side Flap Tarp.

Aluminum Open - Part # 102-0235

Aluminum with Wind Guard - Part # 103-0235



## STEEL PROTECTOR

Galvanized steel housing that offers good protection against loader damage, falling debris and wind. Handles applications up to 18' with Straight Tarp and 16' with Side Flap Tarp.

Steel Protector - Part # 106-0235



## PROTECTOR PLUS

The larger galvanized steel housing offers good protection against loader damage and falling debris for longer applications. Available in steel or aluminum. Handles applications up to 28' with Straight Tarp and 24' with Side Flap Tarp.

Steel Protector Plus - Part # 114-0235

Aluminum Protector Plus - Part # 115-0235



## SUPER SHIELD

The 12 gauge steel housing is powder coated black and offers the highest protection against loader damage and falling debris. Features external ratchet for easy spring adjustment. Handles applications up to 18' with Straight Tarp and 15' with Side Flap Tarp.

Super Shield - Part # 107-0235



## UNIVERSAL SUPER SHIELD

The 12 gauge steel housing is powder coated black and offers the highest protection against loader damage and falling debris. Features external ratchet for easy spring adjustment. Handles applications up to 33' with Straight Tarp and 26' with Side Flap Tarp.

Universal Super Shield - Part # 108-0235



## ULTIMATE ALUMINUM

Beautiful polished aluminum finish makes this system the ultimate. Features external ratchet for easy spring adjustment. Handles applications up to 33' with Straight Tarp and 26' with Side Flap Tarp.

Ultimate Aluminum - Part # 109-0235



## ELECTRIC 9" OPEN

A basic system that is great for longer applications where loader and wind damage are not a concern. Handles applications up to 50' with Straight Tarp and 40' with Side Flap Tarp.

Electric 9" Open - Part # 110-0235



## ELECTRIC UNIVERSAL SUPER SHIELD

Handles applications up to 50' with Straight Tarp and 40' with Side Flap Tarp.

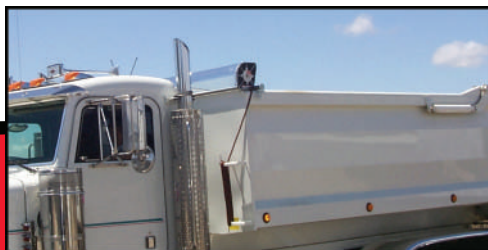
Electric Universal Super Shield - Part # 111-0235



## ALUMINUM ULTIMATE ALUMINUM

Handles applications up to 50' with Straight Tarp and 40' with Side Flap Tarp.

Electric Ultimate Aluminum - Part # 112-0235



SIMPLY THE BEST!

(800) 368-3075

1404 N. Marshall Ave., El Cajon, CA 92020

Office Phone: (619) 449-8860 / Fax: (619) 449-3782

www.pulltarps.com

# THE ORIGINAL PULLTARP SYSTEM

## TARPS AND FABRICS

### HEAVY DUTY MESH

Our high quality vinyl coated polyester mesh fabrics have an open weave design that allows wind to pass through and decreases flapping. Mesh fabric is perfect for covering sand, rock, aggregate and trash. Not recommended for asphalt. Available in Black, Red, Blue or Green.

### ASPHALT MATERIAL

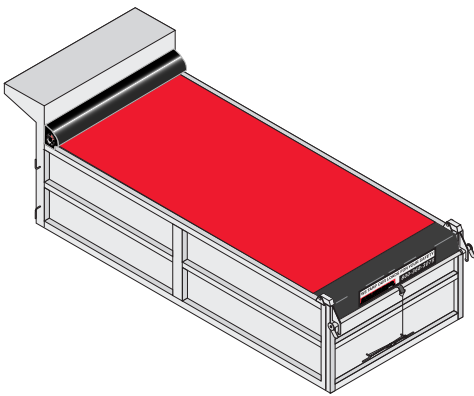
Absolutely the best 400 degree rated tarp material available. This 14 oz. material has a special urethane coating on both sides that is super slick and helps keep the asphalt from sticking. Tarps made from this material are waterproof and are available with optional Side Flaps or Tie Downs to prevent flapping and

### 18 OZ. VINYL

Our 18 oz. waterproof vinyl fabric is a seamless full width tarp. 18 oz. is available in 5 different colors; black, gray, red, blue and green. This material is recommended for Super Slider Cable systems or severe service applications.

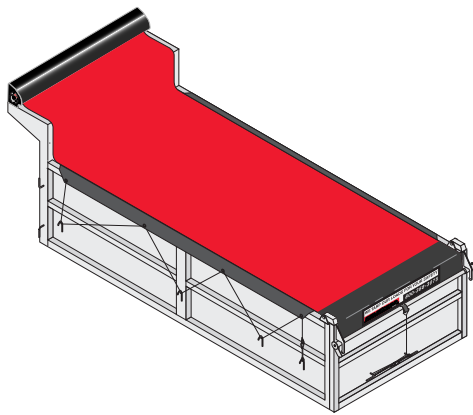
### 14 OZ. VINYL

Our 14 oz. waterproof vinyl fabric is a seamless full width tarp. 14 oz. is great for general service applications for Pulltarps®, Manual Arms, Automatic Arms or Cable Systems. Tarps made from this material are waterproof and are available with optional Side Flaps or Tie Downs to prevent flapping.



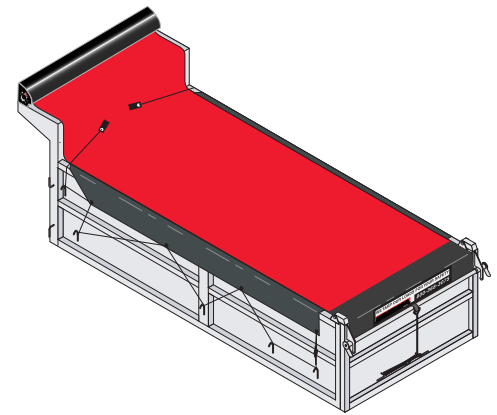
### STRAIGHT TARP

Straight tarps are great for general service applications. The tarp can be ordered with grommets for tying down using bungees or rope.



### TIE DOWN TARP

Our mini flap Tie Down system secures the tarp from wind damage. For some narrower boxes, this may be all the width you need to get the job done. This ground operated system is fast and easy to use.



### SIDE FLAP TARP

Our Side Flap system tarps provide maximum coverage. The tie down ropes are attached to the middle of the tarp, so that when you pull the tie down rope from the back it will cause the flap to flip up on top of the tarp. The front of the flap is tapered so that the tarp rolls up neatly on the roller. This ground operated Side Flap system is so unique it is actually patented.

## PULLTARP SYSTEM OPTIONS



### SIDE FLAPS

Our Side Flap tarps provide maximum coverage. The flaps and tie down ropes all roll up neatly inside the roller. This ground operated Side Flap system is so unique it is actually patented.



### TARP TAMER

The Tarp Tamer's fixed roller holds the front of the tarp down tight to prevent material from blowing. Works with Pulltarps®, Manual Arms and Automatic Arm Systems.  
Part # 501-0701



### LOAD CLIMBER

Pulltarps' patented Load Climber is a simple solution to keeping your pullrod from digging and hanging up in heaped loads. Made of durable materials and easily retrofitted.  
Part # 501-0901



SIMPLY THE BEST!

(800) 368-3075

1404 N. Marshall Ave., El Cajon, CA 92020

Office Phone: (619) 449-8860 / Fax: (619) 449-3782

www.pulltarps.com