

"Demanded by Those Who Know Quality"

FRONT MOUNT PATROL WING

8NTWFM, 8TEWFM, 9NTWFM, 9TEWFM, 10NTWFM, 10TEWFM

STANDARD FEATURES:

Heavy duty construction using [8] 1/2" ribs, 10-gauge moldboard shell, and heavy structural tubing at the mount

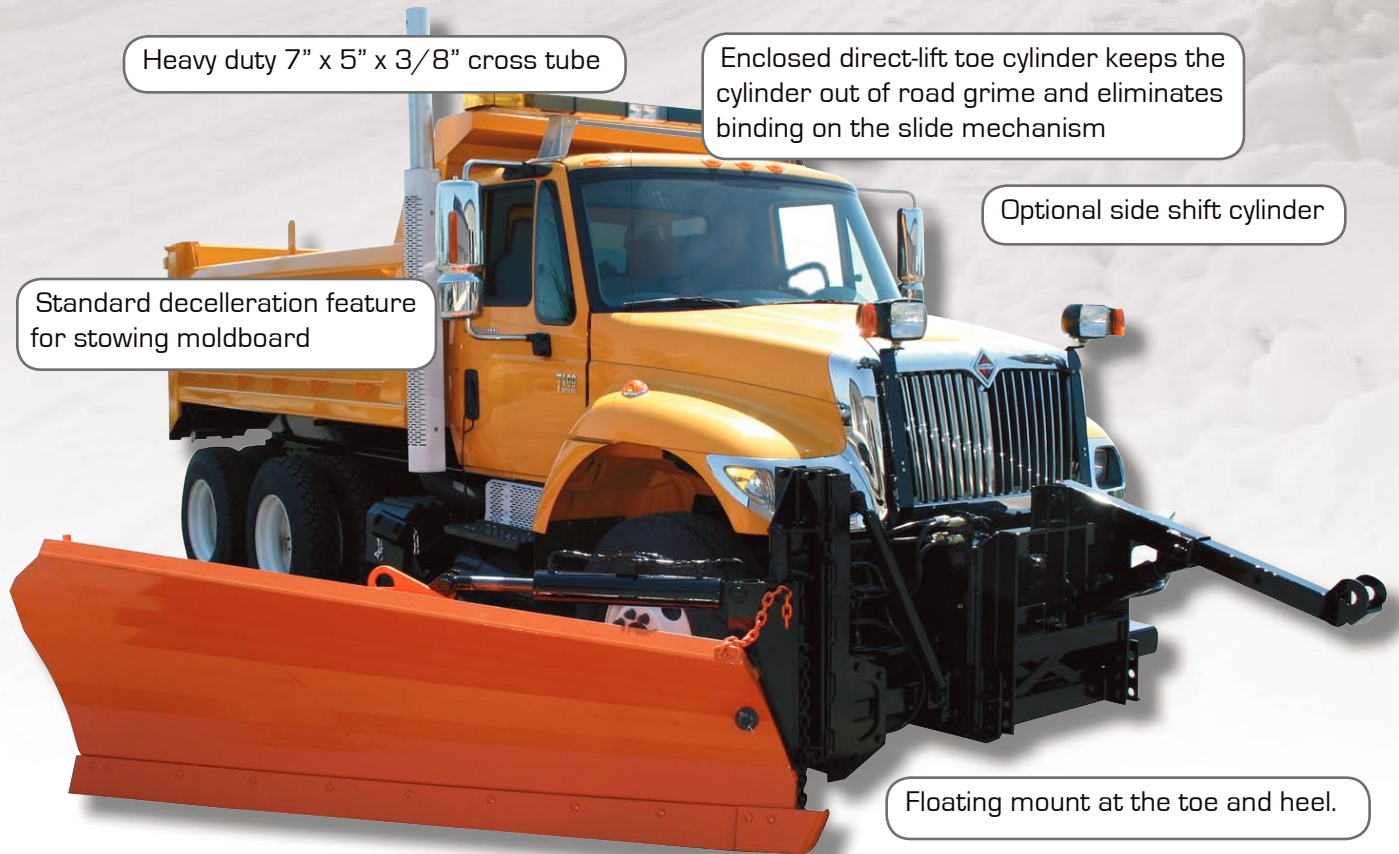
Heavy duty, independent non-binding float mechanism keeps the toe of the moldboard on the ground, where you want it.

Heavy duty 7" x 5" x 3/8" cross tube

Enclosed direct-lift toe cylinder keeps the cylinder out of road grime and eliminates binding on the slide mechanism

Optional side shift cylinder

Standard deceleration feature for stowing moldboard



Floating mount at the toe and heel.

Tapered Moldboard for more effective discharge.

Torsion trip cutting edge using [4] 7/8" diameter springs. Rigid moldboard also available.

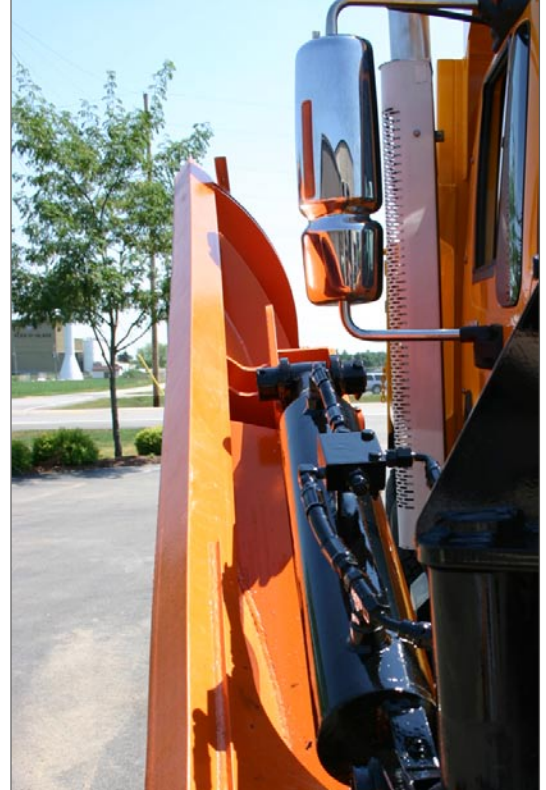
Cushioned hydraulic buffer brace for lower stowing, allowing better visibility and the ability to angle the wing in and out while plowing.

Making our roads safe and clear is Bonnell's primary goal. When the snow is falling fast, you need the equipment that will help you remove the maximum amount of snow in less time. The Bonnell Front Mount Patrol Wing is specifically designed to enhance snow removal

effectiveness by expanding the total plowing width, thus minimizing the number of passes needed to clear the road. This versatile attachment will keep the truck on the road while moving the snow farther off the road.

Front Mount Patrol Wing Specifications

Model:	8TEWFM	9TEWFM	10TEWFM
Overall Length:	9'	10'	11'
Cutting Edge Length:	8'	9'	10'
Cutting Edge Size:	5/8" x 6"	5/8" x 6"	5/8" x 6"
Taper Height:	28" - 34"	28" - 35"	28" - 36"
Trip Assembly (All models):	4 - 7/8" Torsion Springs		
Trip Assembly Construction (All models):	5" x 3" x 1/2" angle		
Moldboard (All models):	10 Gauge Carbon Steel		
Heel Lift Cylinder (All models):	4" x 20" Stroke with 2" Nitrited Rod		
Toe Lift Cylinder (All models):	3" x 24" Stroke with 2" Chrome Rod		
Front Cross Tube (All models):	7" x 5" x 3/8" Wall Rectangular Tubing		
Rear Pushframe (All models):	6" x 4" x 3/8" Wall Rectangular Tubing		
Push Bar:	1 - Telescoping, Spring Buffered		
Finish:	Omaha Orange		



Sold By:



1385 Franklin Grove Rd. • Dixon, IL 61021 • www.bonnell.com
 (815) 284-3819 • (800) 851-9664 • Fax (815) 284-8815

Bonnell Industries reserves the right under its product improvement policy to change construction or design details and furnish equipment when so altered without reference to illustrations or specifications used herein.
 © 2006 Bonnell Industries, Inc. | 0306

